

An aerial photograph showing a wide, muddy river flowing through a valley. The river is light brown and occupies the left side of the frame. To the right of the river, there is a small town with many houses and buildings. The surrounding landscape is green and hilly, with some areas of exposed brown earth or rock. The text "Aerial Photos" is overlaid in large blue letters with a white outline.

Aerial Photos



Aerial Photos

While the word content of the Koitiata History project fills in the detail, the photos add context to the words. A picture is worth a thousand words.

The nine aerial photos included in this collection span the years from 1942 when Koitiata was struggling to be established. They capture in a visual format, the shaky start, and then the eventual growth.

Photo Resolution

Some of these photo files were received in a large file size and format.

They have needed to be compressed to make them suitable for presentation in these pages and the site viewing format. The result is that some detail may have been degraded in that process.

An additional page with access to all nine photos in a higher-resolution format has been created for 'zoomed in' viewing. Access is via the icon labelled *28 Hi Res Aerial Photos* in the 'subject icon area' below. They will open in your browser or other pdf viewer.



[APH = Aerial Photo] **Contents**

APH 1	1942- Sourced from Air Force Museum, Wigram.
APH 2	1967 - Sourced from RDC, via Archives Central, Feilding.
APH 3	1968 - Sourced from RDC, via Archives Central, Feilding.
APH 4	1968 - Sourced from RDC, via Archives Central, Feilding.
APH 5	1973 - From someone somewhere, in the village.
APH 6	1979 - Sourced from RDC, via Archives Central, Feilding.
APH 7	1998 - From Pat & Neil Powell, Koitiata.
APH 8	1998 - From Pat & Neil Powell, Koitiata.
APH 9	2010 - From LINZ Data Service.

Aerial Photo 1

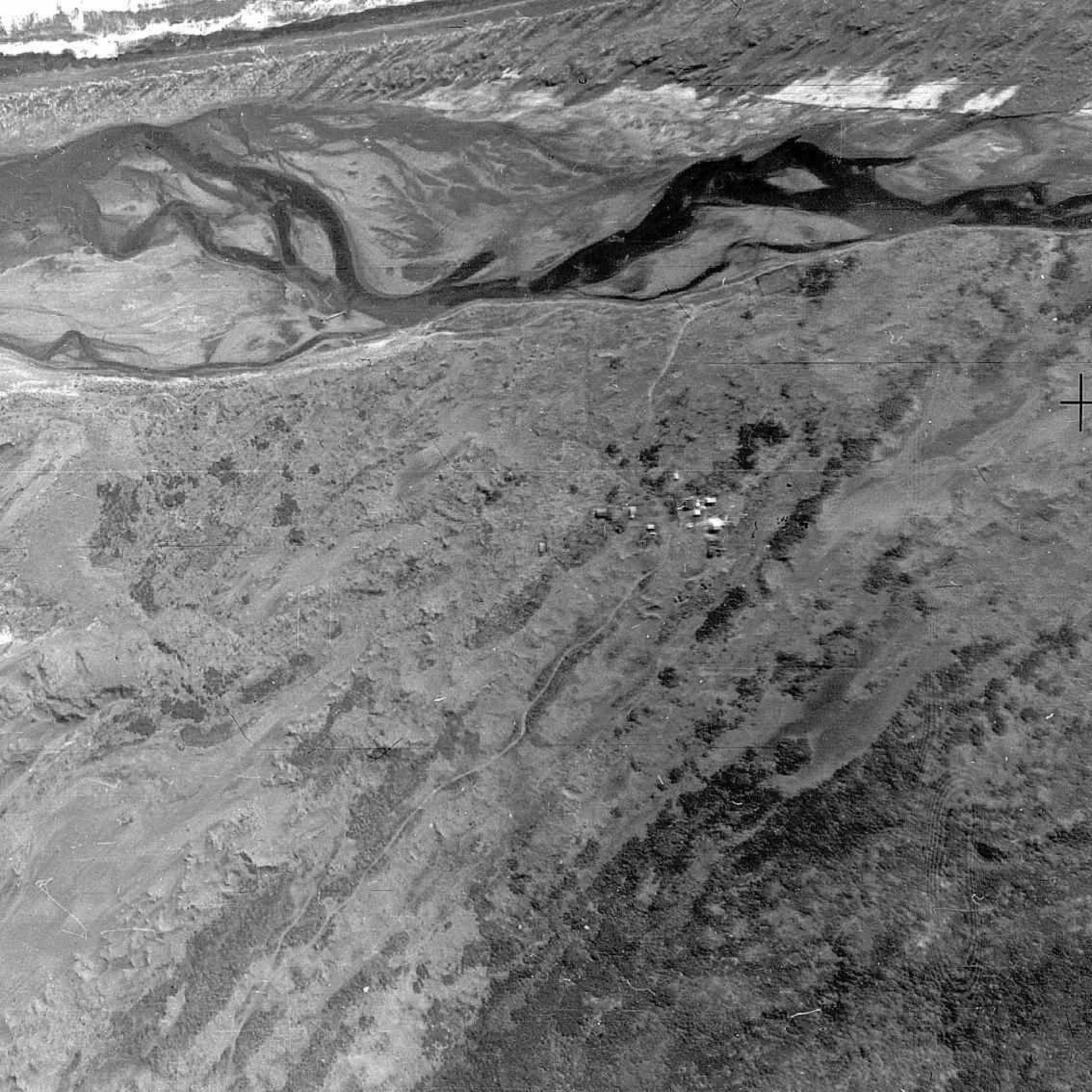
1942

This is a section of the photo taken by RNZAF.

It was acquired as the result of a bit of a cheeky stab-in-the-dark email sent to Ohakea air base asking, “Being that the old bombing range adjacent to the village was used during WW2 for practice, was the recording of results via aerial photography also a thing. And if it was, would there still be any old shots still available that recorded the village from that period?”

The request was passed onto the keeper of photos at the Airforce Museum at Wigram, and he eventually came back with, “I’ve found a photo of the area and it looks like there are some sheds in the middle of nowhere.”

Those “sheds” were the baches of the die- hard pioneers that moved from the buried under sand Rapaki street area and stuck it out “in the middle of nowhere.”



Aerial Photo 2

1967

This photo was supplied by Archives Central, Feilding, from their collection of RDC records.

The original of this photo has a notation referring to 'Gas Line, NP-PN'. That would suggest it was taken when surveying for the gas line.

It also shows that it was taken from a height of 16, 500 feet (5029 metres).



Aerial Photo 3

1968

This photo was supplied by Archives Central, Feilding, from their collection of RDC records.

A feature of this photo is that it shows the width of the river opposite the village. Getting to the beach was a bit of a challenge.

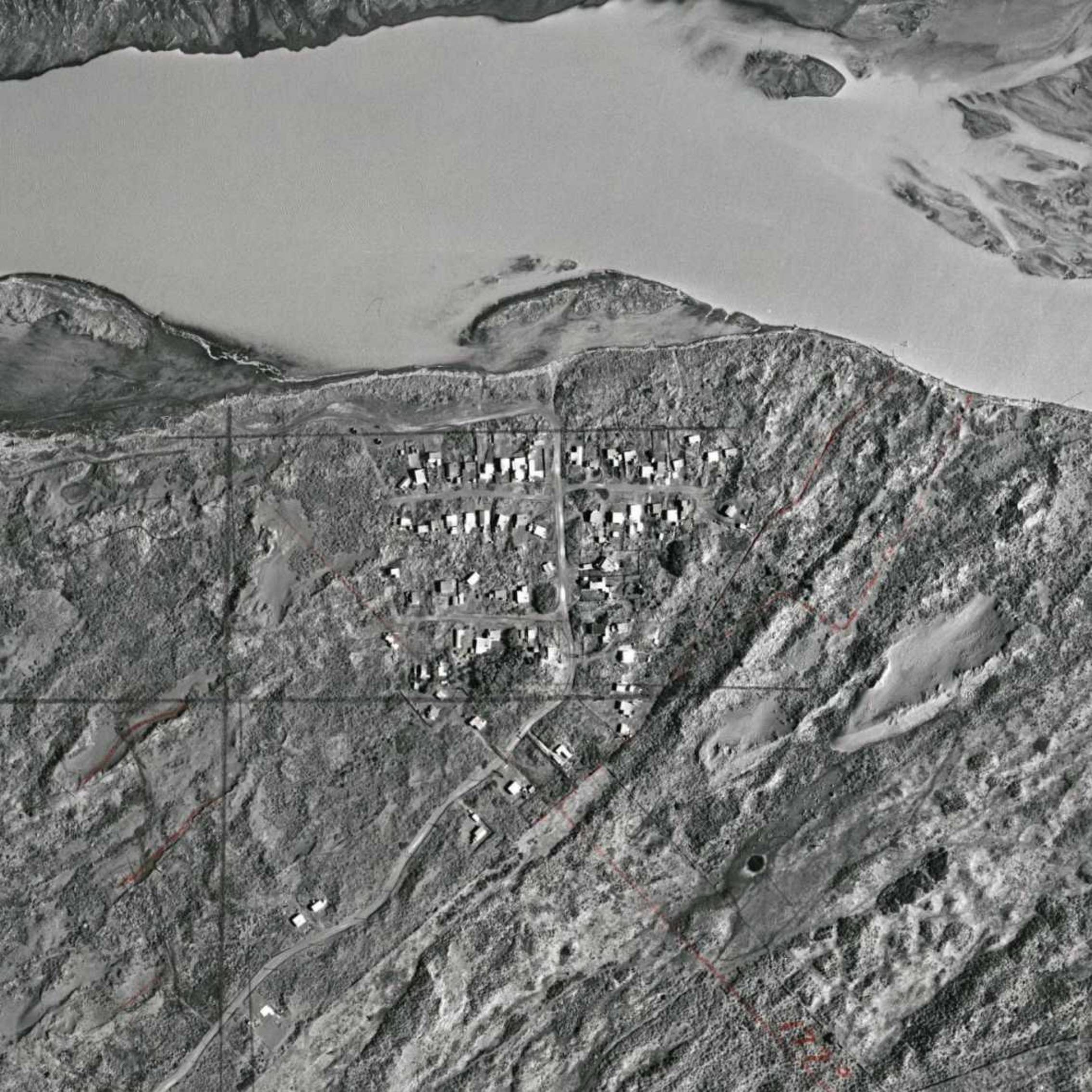


Aerial Photo 4

1968

This photo was supplied by Archives Central, Feilding, from their collection of RDC records.

This a 'zoomed-in' copy of the 1968 photo.



Aerial Photo 5

1973 (*Est.*)

This photo was sourced from somewhere within the village.

This shows that Wainui street is filling up, and the beach access challenge.



Aerial Photo 6

1979

This photo was supplied by Archives Central, Feilding, from their collection of RDC records.

The recently built toilet/shower block is visible, and has now just been renovated, 43 years later. The camping ground was still located on the 'domain'.

Also, clearly visible in this photo are the planting ridges in the new forest area. Because most of the ground was very damp the ridges were formed for planting into and to provide drainage from around the young trees.

The rubbish dump at the end of the track from Omanu street is visible. Omanu street was colloquially known as "Dump Road" for some time. A resident complained to RCC demanding that it 'do something about it' and a street sign was erected, *[no, it didn't say Dump Road]*.



Aerial Photo 7

1998

This photo was sourced from Pat and Neil Powell.

This shows village with Rapaki street extension.

Taken after the river mouth broke through and left the lagoon in front of the village.



Aerial Photo 8

1998

This photo was sourced from Pat and Neil Powell.

This shows the Rapaki street extension, including the camping ground.

Taken after the river mouth broke through and left the lagoon in front of the village.



Aerial Photo 9

2010

This photo was sourced from
LINZ Data Service.

Koitiata is basking in sunshine.
At the Beach.

